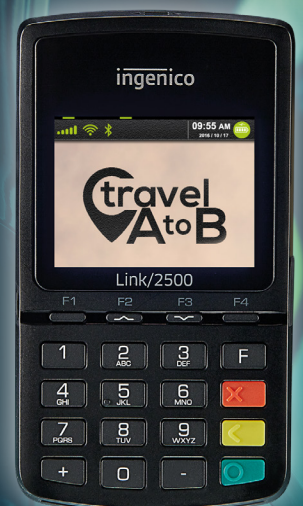


Link/2500 Series

Smart, sleek, simple.
Payment excellence at its finest

- Specifically engineered for flexibility to accept all payment methods including NFC/Contactless, Apple Pay and Google Pay
- Optimize your payment solution for any existing infrastructure thanks to a fully versatile connectivity options
- The ideal payment terminal for mobility use cases



With the Link/2500, Ingenico brings payment acceptance solution to any mobile solution.

Highest security

The Link/2500 is PCI-PTS 5.x certified. Its Telium Tetra OS uses the latest cryptographic schemes with future-proof key length.

All payment options

In addition to EMV Chip & PIN, swipe and sign, Link/2500 supports the broadest range of contactless standards allowing NFC couponing and wallet use cases.

Designed for accessibility

Thanks to an integrated speaker which could provide vocal assistance and a real mechanical keypad with raised marking, Link/2500 is built for the most demanding use.

Designed for mobility

Featuring a pocket-sized, light weight and robust design the Link/2500 is the perfect business acceptance point for mobile solutions.

User-friendly and intuitive interface

Featuring a sleek design, Link/2500 is versatile and intuitive thanks to a bright 2.4" color display and a USB-C connector.

Secure Telium TETRA OS

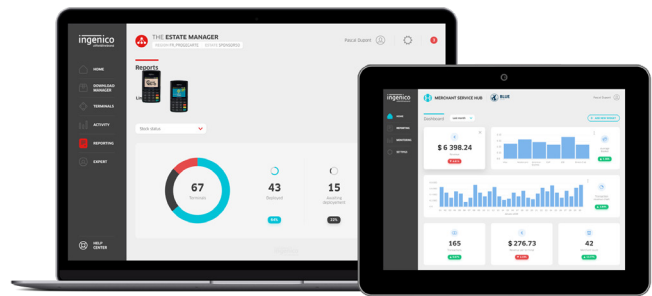
Backed by 40 years of experience and with its user-friendly interface, the Telium TETRA operating system includes the best security mechanisms embedded to protect transaction privacy and leverages Ingenico's unique portfolio of payment applications.

Compatible with Ingenico's suite of services

Keeping the solutions connected, the Link/2500 works in unison with Ingenico's supporting service platforms, meaning merchants will have access to business services such as estate management reporting. Software updates and day-to-day support deliver a hassle-free experience.



The Link/2500 is supported by our Cloud Services



			Link/2500 Standard	Link/2500i (integration)
Processor	• Application & Crypto processor	• Cortex A5	•	•
Memory	• Internal	• 256 MB Flash, 128 MB RAM	•	•
OS		• Telium TETRA	•	•
SIM / SAM		• Up to 2	Optional	
Card Readers	• Magstripe • Smart card • Contactless	• ISO 1/2/3, 500K lifespan • EMV Level 1, 50K lifespan • EMV / ISO14443	• • •	• • •
Display	• Color	• 2.4" color display, backlit, QVGA (240x320 pixels)	•	•
Keypad	• Mechanical	• 20 keys, raised marking	•	•
Audio	• Buzzer • Speaker		• •	• N/A
Terminal Connections	• USB Type C	• Host and Device (Both) • USB power/data & serial docking pads (2500i)	N/A	• •

			Link/2500 Standard	Link/2500i (integration)
Terminal Connectivity	• LAN • Apple iAP2 Chip	• Bluetooth class II • WiFi (Dual band)	• •	• N/A
Terminal Size	• L x W x H	• 5.07 x 2.75 x 0.67" (129 x 70 x 17 mm) • 5.07 x 2.75 x 0.59" (129 x 70 x 15 mm)	• N/A	• N/A
Power Supply	• Terminal	• 5V 1A	Optional	Optional
Battery	• Li-ion		1200mAh (removable)	600mAh
Weight	• Full featured		5.46 oz (155g)	5.89 oz (167g)
Environment	• Charging Temperature • Operating Temperature • Storage Temperature • Operating Humidity	• 32°F to 104°F (0°C to +40°C) • -14°F to 122°F (-10°C to +50°C) • -4°F to 131°F (-20°C to +55°C) • 85% non-condensing at 104°F (+40°C)	• • • •	• • • •
Accessory	• Cable • iCON Case	• USB A to USB C: 1.5m	• Bluetooth	Optional Bluetooth & USB
Security		• PCI PTS v5.x online & offline certified	•	•

USA_DATASHEET_LINK2500_IQWL_211105. All rights reserved. This document is not binding and the specifications above can be modified without prior consent. ©2021



www.ingenico.us

ingenico
aWorldlinebrand